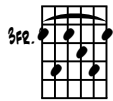


# BLUES #1

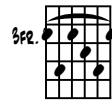
G<sup>13</sup>



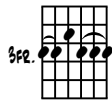
C<sup>9</sup>



G<sup>13</sup>



C<sup>9</sup>

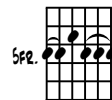


4

G<sup>13</sup>



D<sup>9</sup>

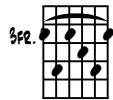


7

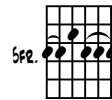
C<sup>9</sup>



G<sup>13</sup>



D<sup>9</sup>



10

ALL BLUES VARIATIONS; PLAY '30' REPITIONS - EACH DAY

## 1. BEGINNING LEVEL

SEE 'BLUES #2'

## 2. INTERMEDIATE LEVEL

SEE 'BLUES #3'

## 3. ADVANCED LEVEL

SEE 'PARKER CHANGES'